

Rock Creek Conservancy District

52nd Annual Meeting

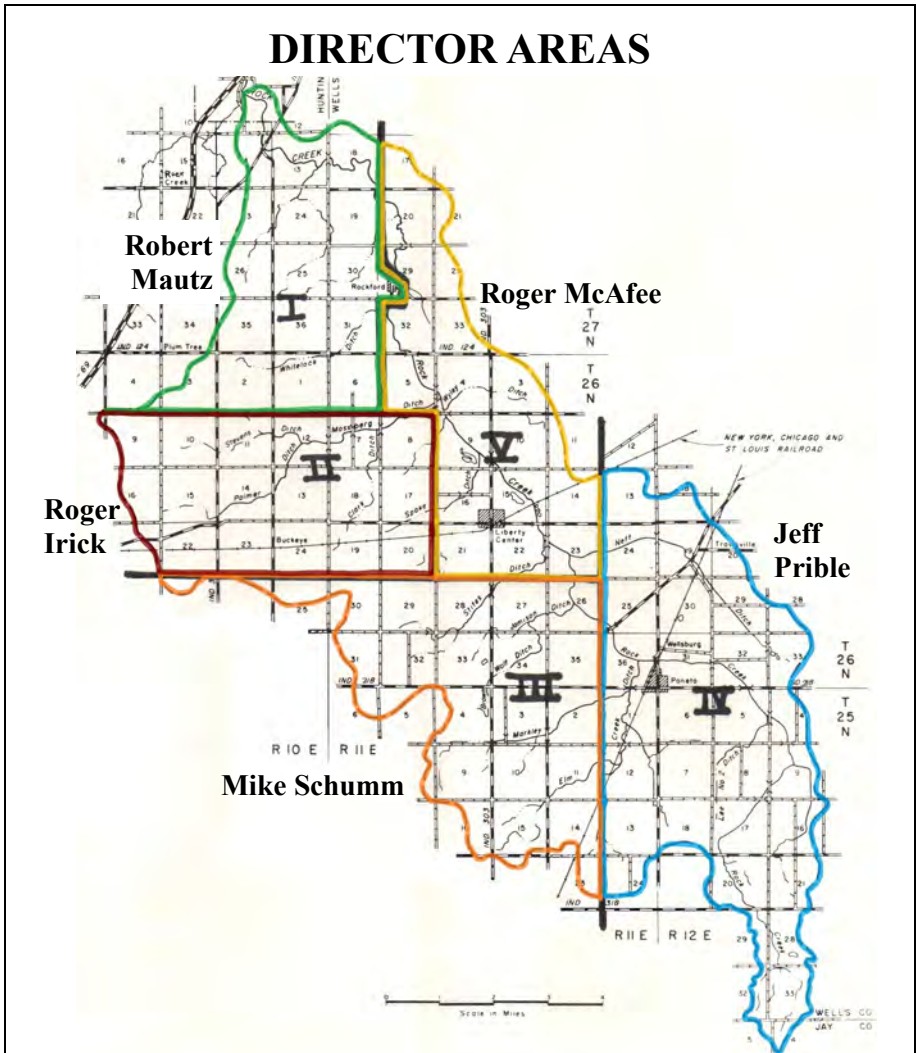
Report to the Public of 2018 Activities

~February 21, 2019~
Wells Co. Community Center
1240 4-H Park Road, Bluffton, IN

Rock Creek Conservancy District

The Rock Creek Conservancy District (RCCD) was established in 1966 by landowners within the watershed to manage reconstruction activities (1969-1975) and to maintain the works of improvements. The purpose of the Rock Creek project was to reduce flooding and provide an adequate outlet for the watershed area.

The District is managed by five Directors who are residents of the watershed and are acquainted with drainage matters.



RCCD MEETINGS

The Rock Creek Conservancy District meets quarterly; in March, June, September, and December on the second Monday of the month at 6:00 p.m. at the RCCD office, at 117 W. Harvest Road, Bluffton. Meetings are open to the public.

Easements and Right-of-Ways

The RCCD Directors have the powers to act, and to construct, and to maintain the works of improvements within the district. The RCCD has a permanent easement and right-of-way of 75 to 125 feet on each side of the Rock Creek, measured from the center of the main channel, and on many of its tributaries.

The easement and right-of-way is for the purpose of construction and maintenance by RCCD contractors. This area is private property and landowners retain possession and control of their land. Anyone other than RCCD contractors entering the right-of-way must contact the landowner for permission to use the area.

The tree plantings, filter strips, and right-of-way markers were just as much a part of the project as the constructed channel. Landowners are not permitted to farm the area between the channel and line of right-of-way markers or block access to these areas.

Any damage caused while performing maintenance activities to crops or other obstructions that are within the easement and right-of-ways are not recoverable from the District.

Funding

The **2018 special benefits tax rate** for the Rock Creek Conservancy District was **\$0.0270** per \$100 of assessed valuation of land and improvements. The certified levy for 2018 was \$64,246.

The **special benefits tax rate for 2019** has been set at **\$0.0270** per \$100 of assessed valuation. The certified levy of \$62,257 will fund the maintenance projects and operating expenses for 2019. The Rock Creek Conservancy District has no outstanding debts.

Rock Creek Conservancy District General Fund Financial Report

January 1 – December 31, 2018

CHECKING

BALANCE January 1, 2018 **\$51,201.42**

RECEIPTS

Huntington Co. Tax Income \$12,352.42

Wells Co. Tax Income 54,288.08

Interest Income - Checking 19.88

Reimbursements & Refunds 74.12

TOTAL RECEIPTS **\$66,734.50**

DISBURSEMENTS

Salaries & Wages 10,575.00

Travel 217.50

Legal Notices/Advertising 320.66

Insurance 968.00

Maintenance 49,319.00

Contingency-Office Supplies 373.94

Contingency-Website 160.05

Contingency-Annual Meeting 960.69

Payroll Liabilities 1,051.99

DISBURSEMENTS \$63,946.83

TRANSFER TO SAVINGS 25,000.00

TOTAL DISBURSEMENTS **\$88,946.83**

CHECKING BALANCE December 31, 2018 **\$28,989.09**

SAVINGS

BALANCE January 1, 2018 **\$30,012.90**

RECEIPTS

Interest Income - Savings \$ 15.29

Transfer from Checking 25,000.00

TOTAL RECEIPTS **\$25,015.29**

DISBURSEMENTS

None \$ 0.00

TOTAL DISBURSEMENTS **\$ 0.00**

SAVINGS BALANCE December 31, 2018 **\$55,028.19**

TOTAL AVAILABLE FUNDS December 31, 2018 **\$84,017.28**

This Financial Report is true to the best of my knowledge.

Stacia L. Henderson, Financial Clerk

~Report to the Public of 2018 Activities~

Maintenance

- The annual spray program was completed on Unit 1 of the Rock Creek channel, from SR 3 in Huntington County to CR 100 S/ Mossburg Ditch in Wells County. (*Right of Way Management*)
- Brush removal within the RCCD 100 feet easement on Markley Ditch, north of SR 218, west of Poneto. (*B.E. Powell Excavating*)
- Removal of downed trees, log jams, and debris on the Rock Creek channel at CR 200 S/CR 300 W and Liberty Center railroad trestle. (*Brickley Excavating*)
- Removal of sandbars and log jams on the Rock Creek channel from CR 200 N to CR 600 W - Huntington/Wells County Line. (*Enyeart Construction*)
- Partnered with the Wells County Surveyor to replace a pipe, clear brush and install rip-rap on the Thompson Tile project that drains into the Rock Creek. (*Wells Co. Surveyor*)
- Cleared the RCCD 50 feet maintenance easement and removed stream obstructions on the Mossburg Ditch from CR 600 W - Huntington/Wells Co. Line to the junction of the Palmer-Stevens drains in Huntington County. (*Enyeart Construction*)
- Bottom dipping and brush removal on the Mossburg Ditch between CR 500 W and CR 600 W - Huntington/Wells Co. Line. (*Enyeart Construction*)
- The RCCD Directors and Contracting Officer met with land owners regarding right-of way access, flooding concerns, and to discuss future maintenance activities.

**Landowners are encouraged to report maintenance needs to: Contracting Officer - Kevin Brubaker
(cell) 260/820-2322**

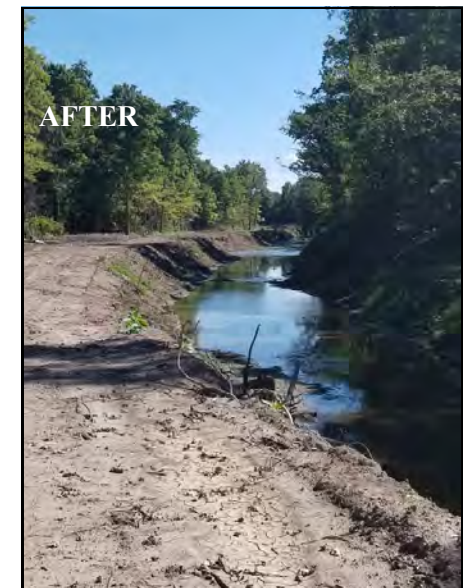
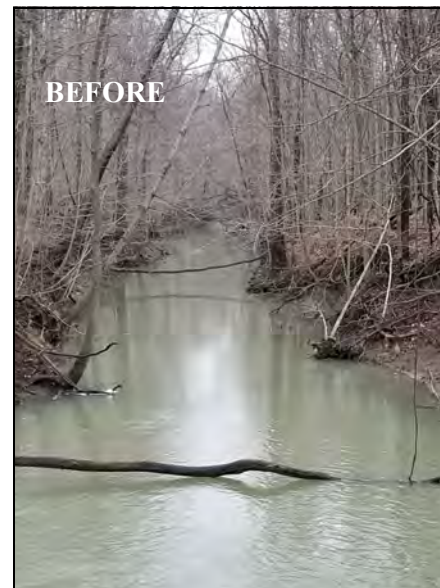
Markley Ditch
~ Brush removal ~



Rock Creek channel
~ Sandbar Removal ~



Mossburg Ditch
~ Clearing right-of-way and stream obstructions ~



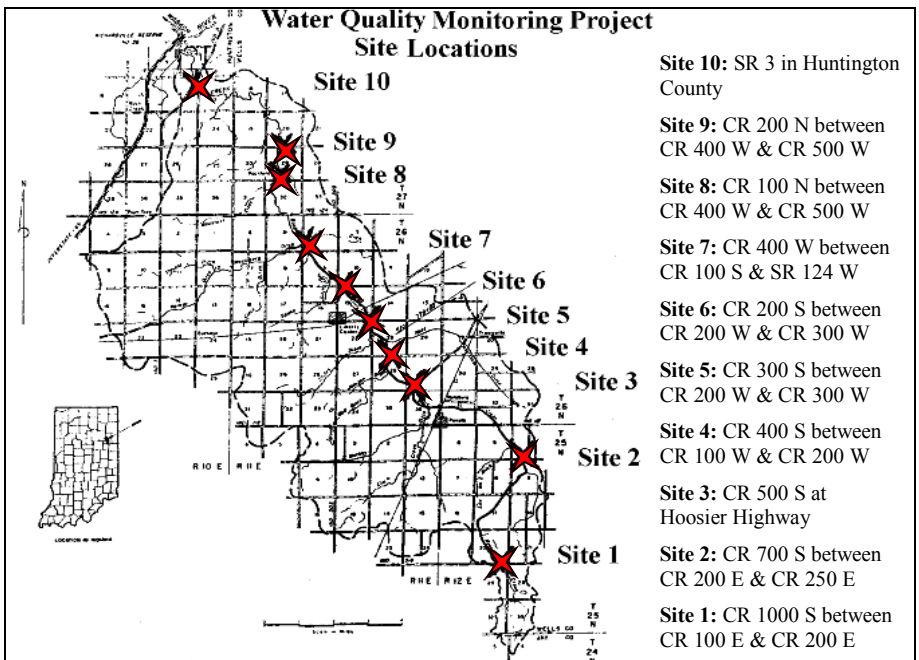
Water Quality Monitoring Program

Monitoring was conducted at 10 sample sites June 15-18, and October 2-5, 2018. The overall health of the Rock Creek has been improving and appears to be good at this time.

Water Quality Consultant, Neil Ainslie and technician, Russell Ainslie, along with a volunteer from Southern Wells High School and a volunteer from St. Frances University conducted the monitoring activities in June. The October sampling event did not have student volunteers due to the risk of West Nile Virus disease.

During the October monitoring event only one site had *E. coli* results that exceeded the state guideline for full body contact. Nitrate levels exceeded state standards at 5 of the 10 sites. Nitrate and phosphorus levels continue to rise and fall depending on the season. Dissolved oxygen levels were below the state average at all sites; however, the macro invertebrate pollution tolerance index scores all ranked excellent. Live freshwater mussels continue to be observed throughout the stream. It was noted that a stream clean up is needed.

**To volunteer for the water quality monitoring program contact
Consultant - Neil Ainslie at 260/740-9162.**



October 2019 Monitoring Results

| Site Number | 1 | 2 | 3 | 4 | 5 | 6 | 7 | 8 | 9 | 10 |
|--------------------------------------|-------|-------|-------|-------|-------|-------|-------|-------|-------|-------|
| Water Temp -°C | 18.9 | 19.08 | 19.43 | 19.7 | 21.02 | 21.05 | 15.16 | 16.68 | 16.92 | 20.0 |
| Flow (cfs) | 0.14 | 1.47 | 5.51 | 6.28 | 11.27 | 8.54 | 10.59 | 13.45 | 14.8 | 19.7 |
| Dissolved Oxygen (mg/L) | 6.25 | 8.12 | 8.17 | 8.04 | 5.23 | 7.56 | 6.48 | 6.59 | 7.40 | 8.71 |
| Dissolved Oxygen % Saturation | 69.0 | 90.0 | 91.2 | 90.3 | 60.2 | 87.2 | 67.1 | 69.6 | 78.5 | 92.0 |
| pH | 7.52 | 7.59 | 7.67 | 7.74 | 7.52 | 7.62 | 7.57 | 7.63 | 7.74 | 7.83 |
| Turbidity (NTU) | 15.2 | 19.8 | 12.1 | 7.7 | 15.4 | 0.7 | 8.8 | 20.3 | 20.3 | 14.5 |
| Nitrite (mg/L) | 0.010 | 0.017 | 0.013 | 0.726 | 0.116 | 0.056 | 0.053 | 0.026 | 0.020 | 0.023 |
| Nitrate (mg/L) | 50.6 | 28.6 | 14.1 | 13.6 | 10.1 | 9.7 | 7.5 | 6.6 | 6.6 | 7.0 |
| Orthophosphate (as mg/L Phosphorous) | 0.072 | 0.069 | 0.061 | 0.062 | 0.065 | 0.067 | 0.070 | 0.069 | 0.056 | 0.050 |
| <i>E. Coli</i> (cfu/100 ml) | ND | ND | ND | ND | ND | ND | 33 | 67 | 100 | 300 |
| Macros - PTI | 24 | 27 | 32 | 30 | 29 | 27 | 26 | 31 | 41 | 37 |
| CQHEI | 25 | 56 | 60 | 51 | 70 | 59 | 69 | 54 | 61 | 69 |

ND: None Detected

State Water Quality Standards

Dissolved Oxygen: min. 4.0 mg/L, max. 12.0 mg/L; IN average 9.8 mg/L

Dissolved Oxygen % Saturation: The % Oxygen gas dissolved in 1 L of water at a given temperature COMPARED to the maximum Oxygen gas that can remain dissolved in 1 L of water at the same temperature and pressure.

pH: IN average 6.0 - 9.0; typical range 7.2 - 8.8

Turbidity: max. 10.4 NTU (US EPA recommendation)

Nitrite: 1 mg/L

Nitrate: 10 mg/L

Phosphorous: State standard not established.

E. coli: Full body contact 235 cfu/100 ml

Macros - PTI (Pollution Tolerance Index): 23 or more = Excellent, 17 to 22 = Good, 11 to 16 = Fair, 10 or less = Poor

CQHEI (Citizens Qualitative Habitat Evaluation Index): Scores of 60 or more are considered to be “generally conducive to warm water fauna.”

Historical Information

Poor drainage outlets and flooding had long been a problem in the Rock Creek watershed. In 1962, the Wells and Huntington Co. Soil and Water Conservation Districts and Co. Commissioners applied to the Soil Conservation Service (SCS) under Public Law-566 for assistance. The request was approved in 1963, and SCS made a preliminary study and presented a favorable report in 1964.

The Rock Creek Conservancy District was then established through court proceedings under the Indiana Conservancy Act in 1966, with more than 60% of the landowners signing the petition. The final work plan for the Rock Creek was completed by SCS in 1966 and accepted by the local people.

For construction purposes, the total 24.3 miles of planned open drain reconstruction was divided into three units. Construction began March 10, 1969 and was completed in 1975. Unit 1 consisted of 9.6 miles of channel excavation and included all the rock excavation. The National Environmental Act of 1969 necessitated a new study and revised plan for Unit 2. It was approved in May 1972. Work began in early 1973 and was completed September 16, 1975. Unit 2 consisted of 14.7 miles of channel excavation using the alternating one-sided construction method, silt traps, deflectors, and fish pools. Unit 3 includes 13,370 feet of the Mossburg Ditch. Construction activities included clearing, log jam and debris removal. Construction began in February 1974 and was completed in July 1974.

The cost for the reconstruction work on the Rock Creek was \$1,980,487.34. Of this amount, \$1,701,679.34 was federal funding, and the remaining \$279,807.97 was local funding. No engineering fees were included in the cost, as the SCS provided all engineering services.

From 1970-1976 the special benefits tax rate paid by landowners within the watershed was \$0.42 per \$100 of assessed valuation. The rate was lowered as loan obligations were retired. All loans were paid in full at the end of 1991. Since then, the District has relied on the yearly tax collections to fund maintenance projects.

RCCD Directors

Roger Irick, Chairman

Huntington Co. - Area II

Robert Mautz, Vice Chairman

Huntington Co. - Area I

Mike Schumm

Wells Co. - Area III

Jeff Prible

Wells Co. - Area IV

Roger McAfee

Wells Co. - Area V

Contracting Officer

Kevin Brubaker 260/820-2322

Water Quality Program Coordinator

Neil Ainslie 260/740-9162

Financial Clerk

Stacia Henderson 260/273-0972

ROCK CREEK CONSERVANCY DISTRICT

117 WEST HARVEST ROAD

BLUFFTON, IN 46714

e-mail: shenderson@adamswells.com

www.rockcreekcd.org